



TECHNOLOGY AND IP FORUM:

Driverless Cars, Smart Machines, and Automated Equipment

October 4, 2018

Randall Haimovici

Uber
Director, Litigation
rhaimovici@uber.com

Robert Keller

Cisco Systems
Senior Corporate Council
robkelle@cisco.com

Patty Robbins

Uber
Director
patty.robbs@uber.com

Mike Zito

Shook, Hardy & Bacon
Partner
mzito@shb.com

ROAD MAP

- Introductions
- Presentation Overview
- State of Technology and Innovations
- Legal and Policy Considerations
- Discussion

ar·ti·fi·cial in·tel·li·gence

/,ärdə'fiSHəl in'teləjəns/

Noun

The capability of a machine to imitate intelligent human behavior

AKA: Machine Learning, Machine Decision Making, Deep Learning, Automation, IoT

APPLICATION OF AI



THE FUTURE OF DRIVERLESS VEHICLES?



DRIVERLESS VEHICLES MUST COMMUNICATE

Outgoing Information:

- Car Info
(who is in it, where is it, where is it going)
- Car Data
(mechanical problems, fuel level, flat tire)

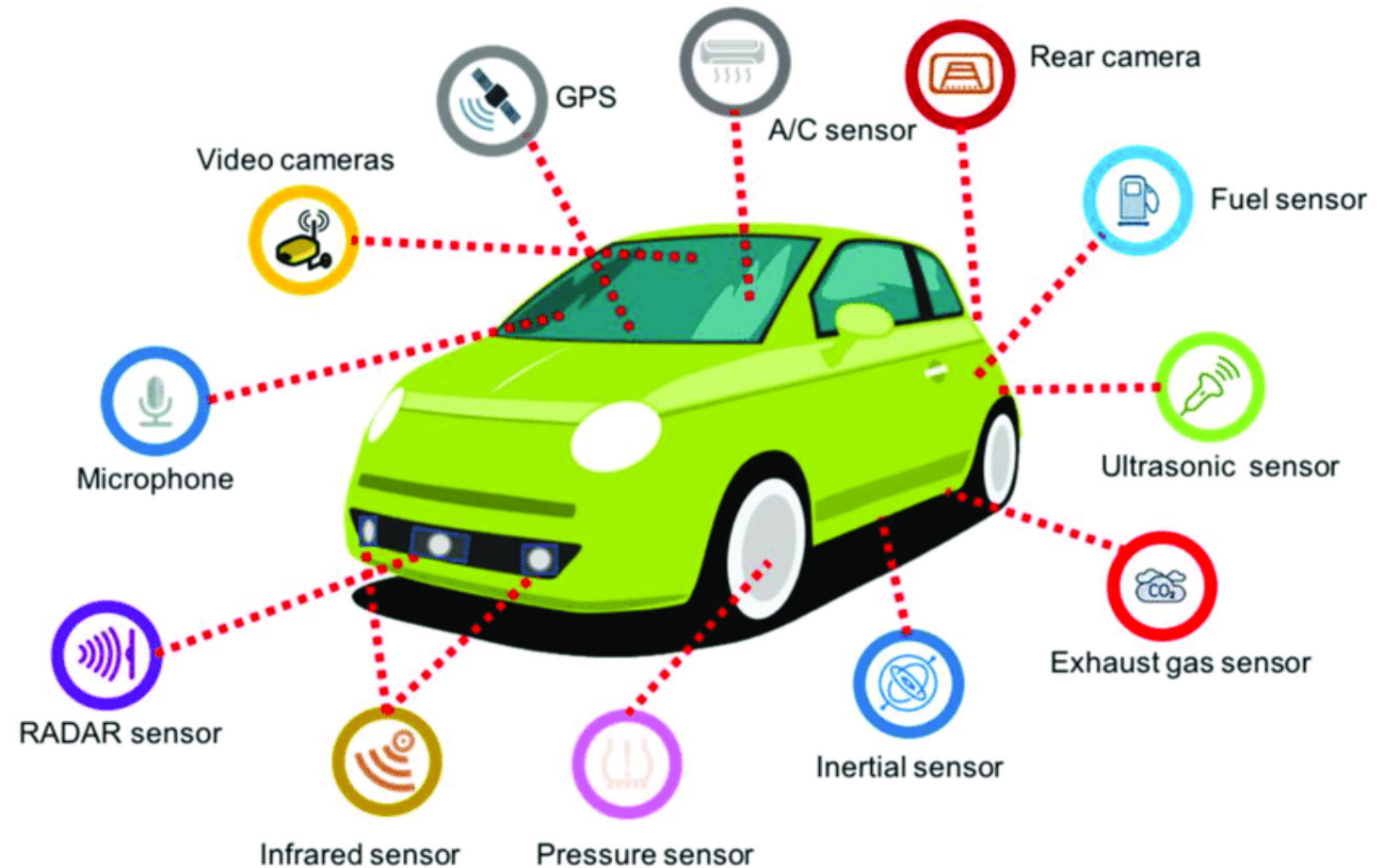
Incoming Information:

- Road Conditions
(accidents, closures, weather)
- Other Cars
(where they are, where they're going, speed)
- Immediate Surroundings
(where they are, where they are going, speed)
- Software Updates
(Tesla)



NETWORKING *in Driverless Vehicles*

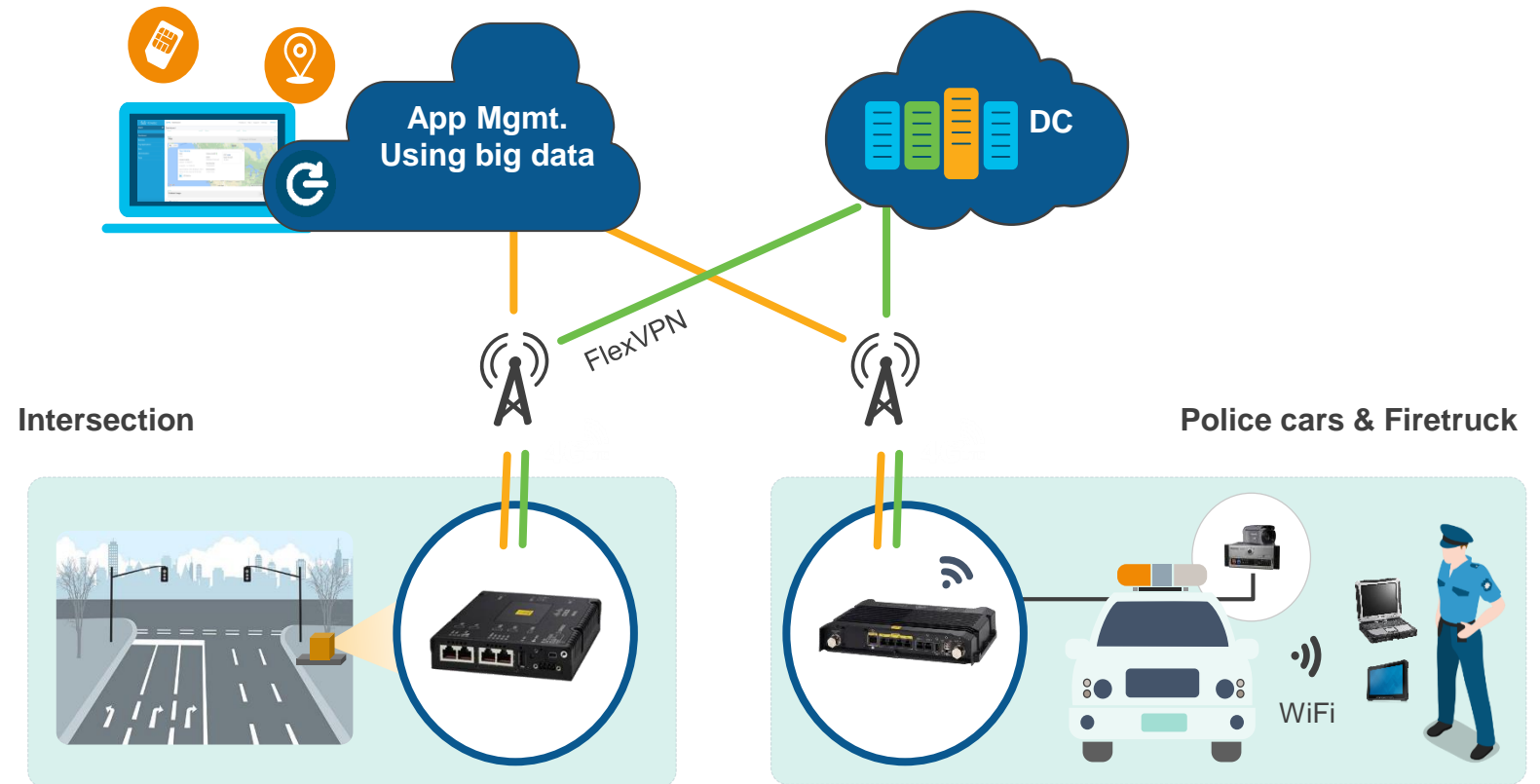
- End point devices
- Wireless tracking
- Networking and Info Processing
- Security Products



NETWORKING

extends beyond the individual vehicle

Connected
Roadways
are here!



LAWYER IMPLEMENTATION OF AI



UNIVERSAL CHALLENGES

with AI Implementation

Compliance

Public Policy

Data Security
and Privacy

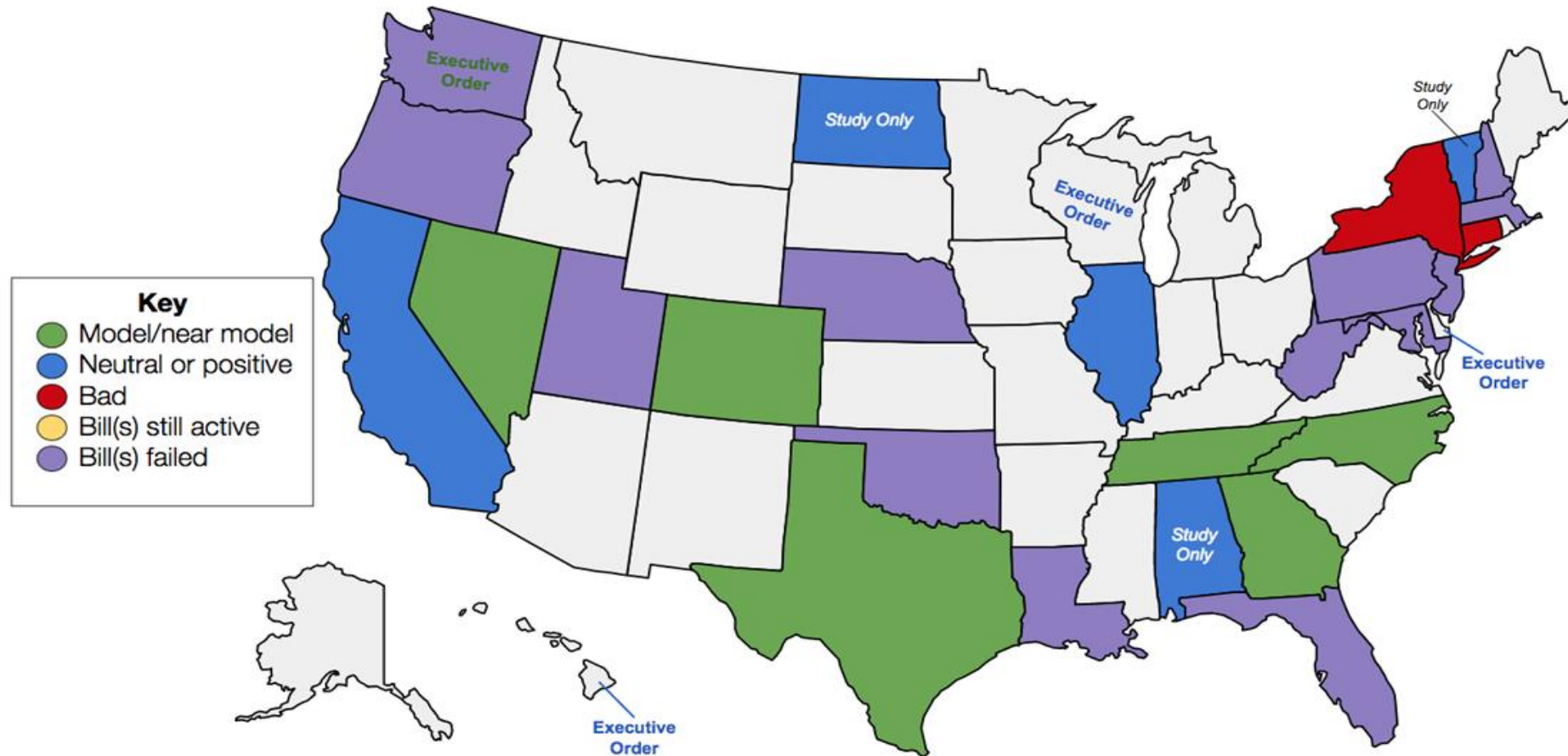
Intellectual
Property

Business
Litigation

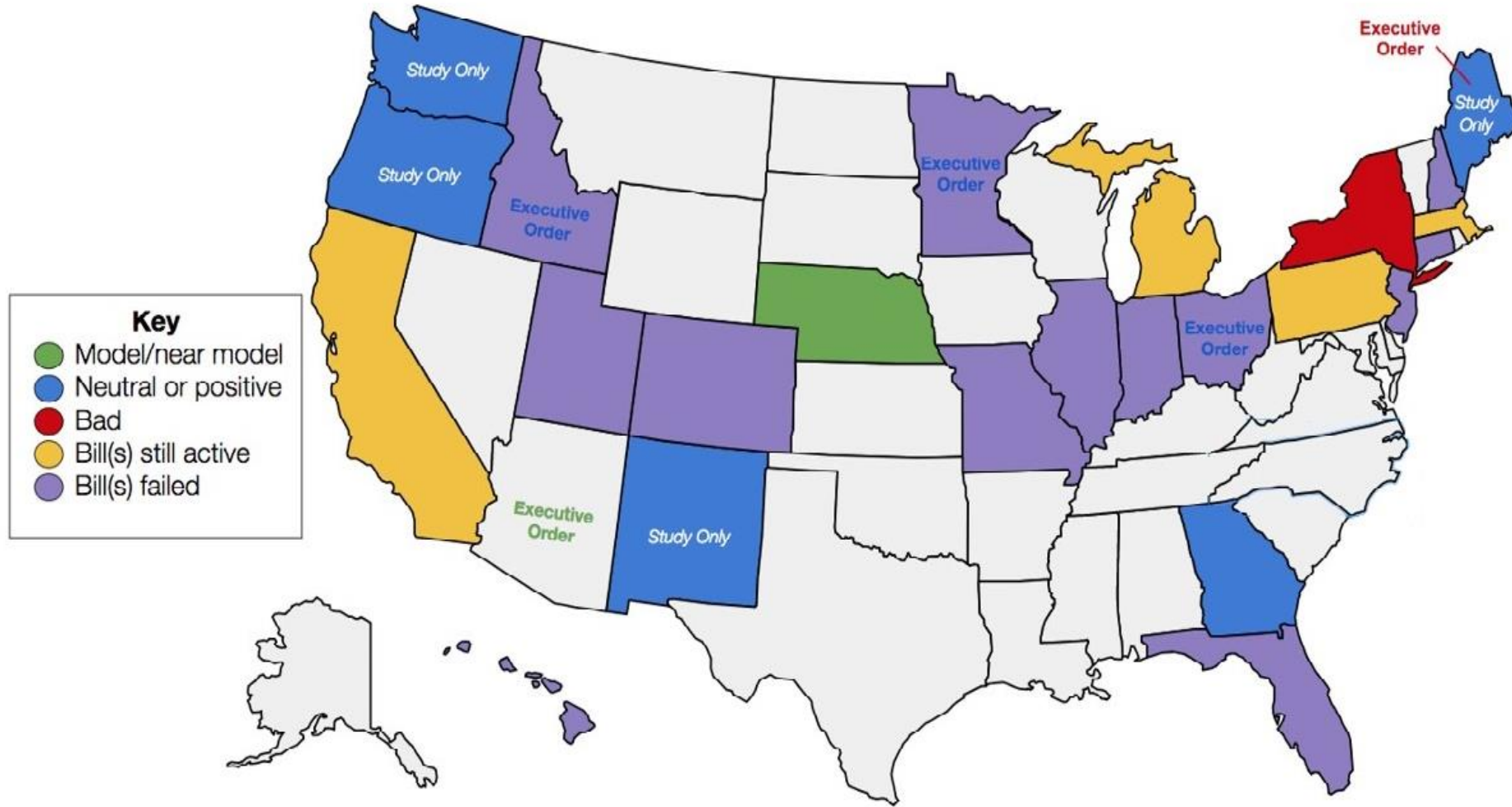
Tort and
Products
Liability

Class Action
and Complex
Litigation

2017 STATE AV LEGISLATIVE ACTIONS



2018 STATE AV LEGISLATIVE ACTIONS



The ethical challenges of artificial intelligence

As AI advances, systems will need to be trained and 'raised' in much the same way as humans

The Risks

The robots are coming... but are we ready for AI risk?

WEB US & WO

Face
exple
'cons

Admiral In
to see if th

Intelligent Machines

When an AI finally kills someone, who will be responsible?

Legal scholars are furiously debating which laws should apply to AI crime.

CROSSWORDS

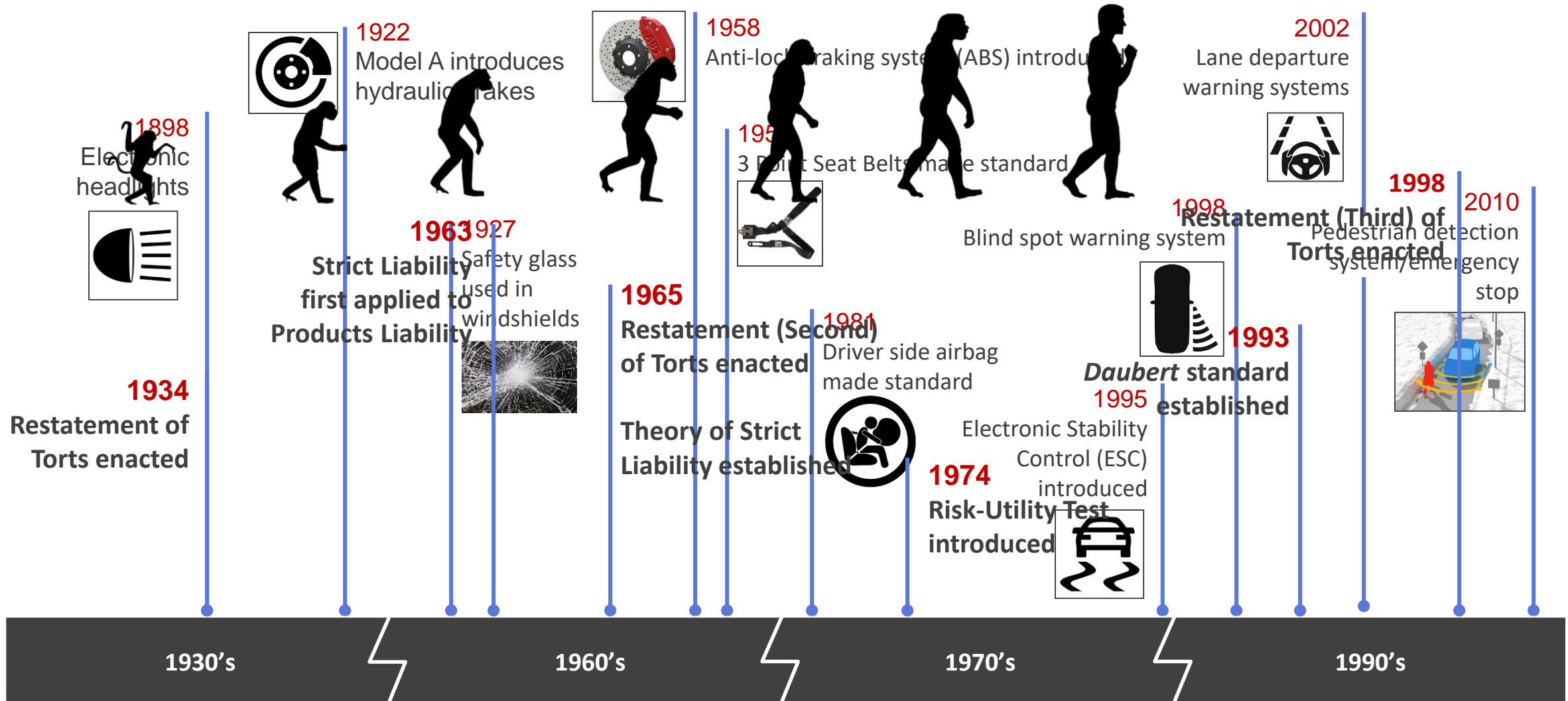
WA

lunnit?

olkswagen Plant

ter Twitter

EVOLUTION OF COMMON LAW PRODUCT LIABILITY CONCEPTS



COMMON LAW ADAPTS

to improvements in Technology



Auto-Pilot

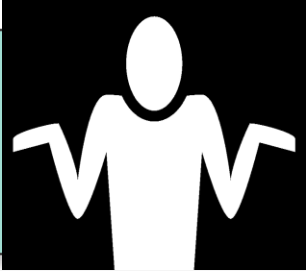


Robotics
in Manufacturing



Artificial Intelligence
in Medical Devices

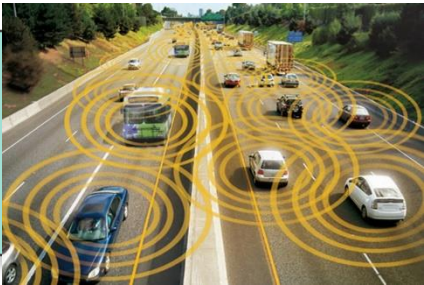
NOT FEASIBLE OR DESIREABLE TO HAVE LIABILITY STATUTES



Statutes Premature



Statutes Quickly Obsolete

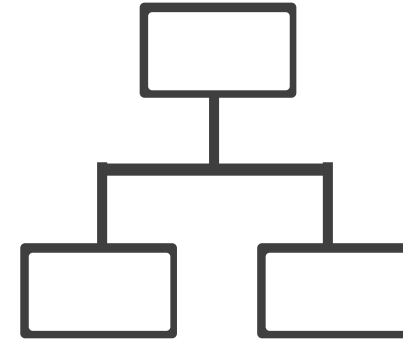
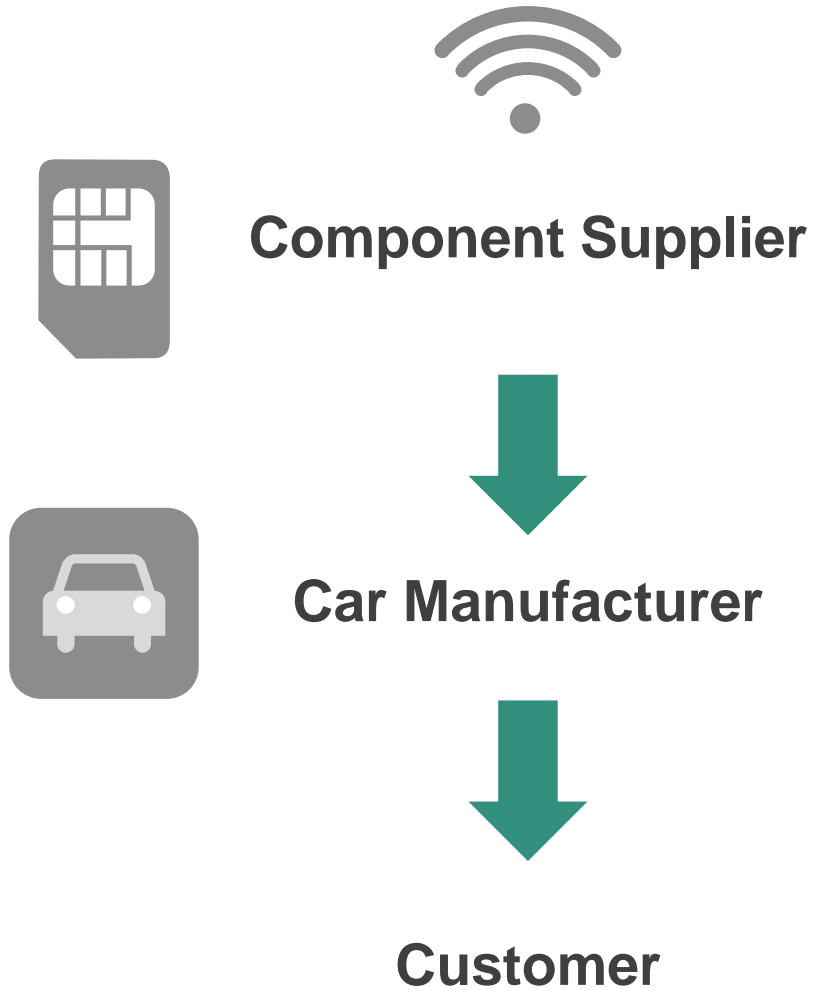


Liability For Delay

PRODUCT + SERVICE LIABILITY

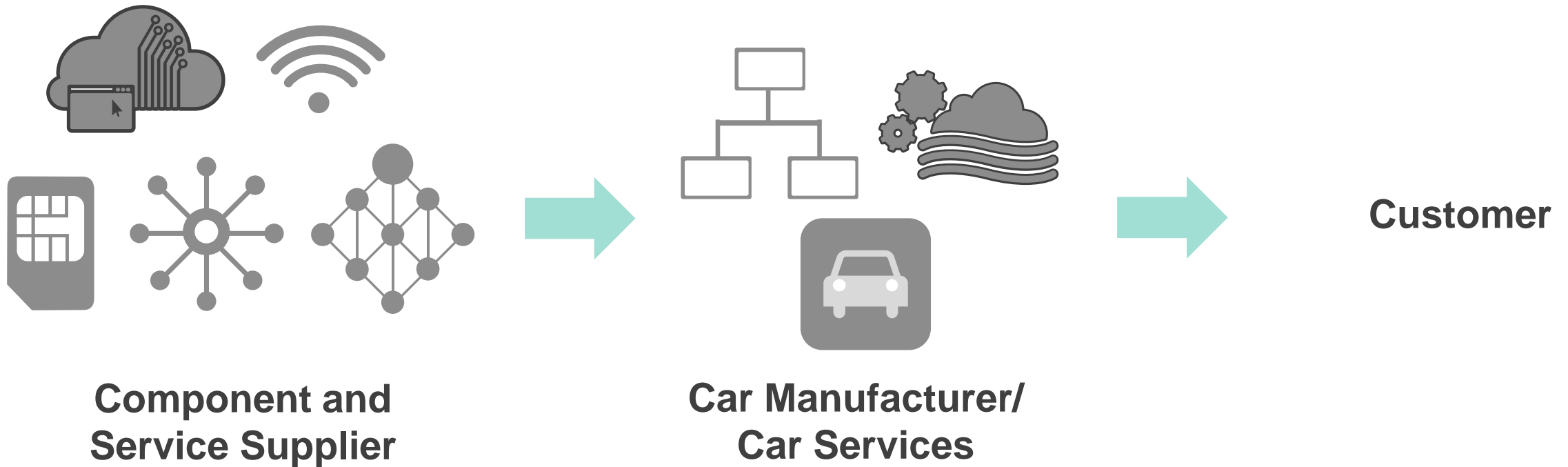
- Liability of producers of equipment used in the stream of commerce
- Modifications of equipment
- Comparison of service liability vs. product liability

STREAM OF COMMERCE



- Did they disclaim their products?
- Is the scope of use beyond intended purpose?
- Is liability limited to product performing in limited capacity?

STREAM OF COMMERCE



Increased services pushes risk upstream to service provider

DATA PRIVACY

- What is considered personally identifiable info in a driverless vehicle?
 - Look at local laws
 - Location only, or tagged to an individual?
- How can personal data be used?
 - Is it shared with others? Is it aggregated in some instances and not in others?
- Can an individual opt out without impacting the functionality of the driverless vehicle?

DATA SECURITY

- Potential risks with a breach of data in driverless vehicles
- Stealing of personal data
- Control of vehicles
- Where does liability lie in the event of a data breach?



Questions?